
SAFER LEWISHAM STRATEGY 2011-2014



Agreed by the Safer Lewisham Partnership on 28/03/2011

Contents

1. Introduction-----	4
2. Safer Lewisham Partnership-----	4
3. National and Local Policy Context -----	6
4. What we know about crime in Lewisham.-----	10
5. What we achieved in 2008-2011-----	11
6. Intelligence development cycle-----	14
7. Our Aim : public protection through crime reduction -----	14
7.1 Reducing Anti-social Behaviour (ASB) -----	15
7.2 Reducing Reoffending – rehabilitation, punishment and payback-----	15
7.3 Working with young people - both victims and perpetrators of crime – Youth Justice-----	17
7.4 'Volume Crime' – Offending that affects most people in Lewisham-----	18
7.5 Making Lewisham Safer Through Crime Prevention – and working with communities-----	19
8. Further Information and Contact Details-----	20

Mayor's Foreword

Reducing crime is a priority for us all. The Council, the local Police, our public agency partners, and most importantly the citizens of Lewisham, all share a deep commitment to tackle crime and its root causes. We can only do this by working in partnership. In Lewisham, the practice of working together extends well beyond local public authorities. It is embedded in our community and exemplified by the work of the many individuals and groups working tirelessly across the borough.

We know from talking to local people that crime is one of their top concerns. We have a duty and responsibility to address these concerns. Doing so requires a multi-layered response, one that both cuts across and involves the various service providers, and critically, the local citizens of Lewisham. The Safer Lewisham Partnership brings together input from all of these agencies, including the Police, Probation Services, Housing providers, the local Community and Voluntary Sector and the Council, and this Strategy has been developed by the partnership collectively. Discussions have also taken place at Neighbourhood Panels, Local Assemblies and a range of other fora to ensure that the strategy reflects the priorities for Lewisham.

Public Services face a huge challenge over the next few years. The financial constraints within which each of us has to work are very tight. This is why it is so important that we work together effectively and efficiently as our combined efforts will have a greater impact than any one agency acting alone. The role of the Safer Lewisham Partnership remains the same: by working together we will do all we can to tackle crime, drugs and alcohol issues in our borough – making Lewisham a safe place for all.

Sir Steve Bullock

1. INTRODUCTION

This Strategy provides the framework to coordinate efforts to fight crime and the fear of crime - making the borough a safer place and providing sanctions and appropriate interventions for Lewisham offenders. The Strategy has been developed with the full involvement of all the agencies that make up the Safer Lewisham Partnership and sets out the priorities and actions for the next three years. The Strategy draws on a detailed analysis of a number of data sources, including community intelligence and follows consultation with a wide range of statutory and non-statutory agencies.

2. SAFER LEWISHAM PARTNERSHIP

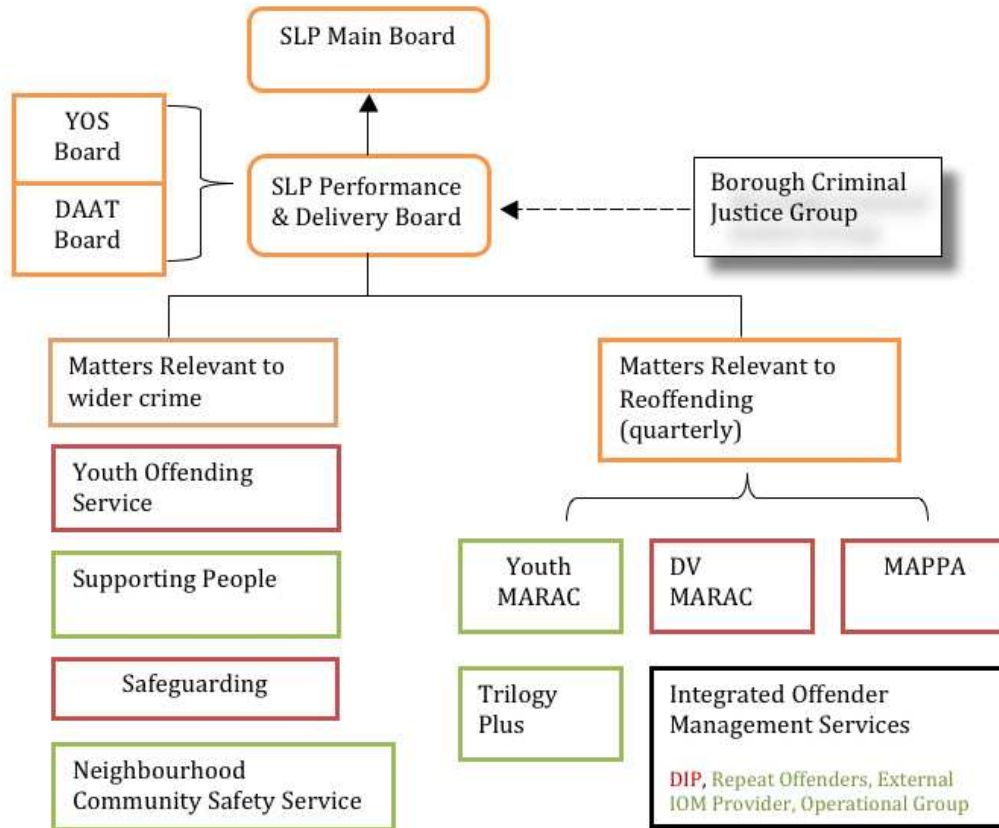
Effective partnership working is key to creating and maintaining safer communities. The Safer Lewisham Partnership (SLP) brings together representatives from those agencies who are focused on reducing crime and the fear of crime and is one of six Strategic Partnerships that make up the Lewisham Strategic Partnership (LSP). For more details on the work of this strategic body please visit <http://www.lewishamstrategicpartnership.org.uk>

The Safer Lewisham Partnership co-ordinates multi-agency action to reduce crime and ASB, to reduce the harm caused by drug and alcohol abuse and to develop a safer and stronger community in which residents, families and businesses can thrive.

The Partnership Board is chaired by the Mayor of Lewisham and members include representatives from Lewisham Police, the Metropolitan Police Authority, the London Probation Service, the Public Health Service, Victim Support, the UK Border Agency, the London Fire Brigade and Lewisham's Community Police Consultative Group (LCPCG). Advisors to the partnership include the Youth Justice Board and the National Treatment Authority.

Through the LCPCG, local assemblies and other fora, the Partnership ensures that the voice and experiences of local people are reflected in this strategy.

The governance structure for the Safer Lewisham Partnership and related boards and the links to operations and projects are outlined in the chart below:



(Items in orange are executive, performance and oversight structures, items in red are primarily statutory functions, and items in green are on-going projects and teams, who are working to make Lewisham safer.)

The activity undertaken within this structure is coordinated with that of other local agencies, such as those responsible for regeneration, children, families and learning, the economy and health.

This strategy should be read in conjunction with the plans of these boards.

3. NATIONAL AND LOCAL POLICY CONTEXT

This strategy has been developed against a background of change to national and local policies. The year 2010 saw many changes introduced by the Government, with significant changes being made to the way partnerships work to deliver crime reduction, and the announcement in various Green and White Papers of plans to implement additional policies.

The majority of old, centrally set, Local Government targets and indicators have been deleted, with a new emphasis on localism. Authorities are expected to select and implement their own performance frameworks and to be held locally accountable for the delivery of these performance measures.

The overall vision for Lewisham is established in *Shaping our future – Lewisham’s Sustainable Community Strategy*, ‘*Together, we will make Lewisham the best place in London to live, work and learn.*’

Shaping our future incorporates some key assumptions about the changes the borough is likely to experience between now and 2020, based on projections, evidence prepared for the borough’s Local Development Framework and national and regional strategies such as the London Plan.

Drawing upon all this information and reflecting the concerns and aspirations of Lewisham’s citizens, the Sustainable Community Strategy sets out six priorities. It states that the Lewisham Strategic Partnership will work alongside citizens to build and support sustainable communities that are:

1. **Ambitious and achieving** – where people are inspired and supported to fulfil their potential.
2. **Safer** – where people feel safe and live free from crime, antisocial behaviour and abuse.
3. **Empowered and responsible** – where people are actively involved in their local area and contribute to supportive communities.
4. **Clean, green and liveable** – where people live in high quality housing and can care for and enjoy their environment.
5. **Healthy, active and enjoyable** – where people can actively participate in maintaining and improving their health and well-being.
6. **Dynamic and prosperous** – where people are part of vibrant communities and town centres, well connected to London and beyond.

This strategy is the document that details how the Safer Lewisham Partnership will contribute to the achievement of the **Safer** strand – where people feel safe and live free from crime, antisocial behaviour and abuse and which commits partners to work together to:

- Reduce the overall level of crime to below the London average.
- Tackle antisocial behaviour and ensure that people feel confident and safe throughout the borough.
- Keep our children and young people safe from harm, abuse and criminal activity.

- A reduction in the rates of crime that impact most upon Lewisham, such as serious violent crime, serious acquisitive crime and repeat incidents of domestic violence.
- A reduction in the number of first time entrants to the Youth Justice System.
- A reduction in reoffending and substance misuse among Lewisham's adults and young people.
- An improvement in the stability of placements for looked after children.
- A reduction in the numbers of people killed or seriously injured on Lewisham's roads.

These objectives are over-arching ambitions that support the vision of a Safer Lewisham. Each year priorities will be set based on an evidence-based, 'bottom-up' approach through the Partnership Intelligence Development Cycles as outlined later in this document.

As highlighted above, alongside the strategic direction set out in the Sustainable Community Strategy, a number of key papers have been issued by central Government to which the Partnership will need to take into account as it takes forward its work. The content of a number of key documents is summarised below:

Policing in the 21st Century - Police Reform and Social Responsibility Bill¹

The Police Reform and Social Responsibility Bill is making its passage through Parliament, following its introduction to the House of Commons on 30 November 2010.

Its stated primary aims are to make the police service "more accountable to local people" and tackle "alcohol-related violence".

One of the critical changes to existing structures is the introduction of directly elected Police and Crime Commissioners (PCC) to be introduced from May 2012, as well as the creation of Police and Crime Panels (PCP) in each force area. These structures will replace the current role of the Police Authorities and the National Police Improvement Agency. In London, The Mayor of London will assume the role of the Police and Crime Commissioner. The Mayor will be able to appoint and delegate to a Deputy Mayor for Police and Crime, who will be able to undertake the Mayor's functions in office but the Mayor will retain ultimate responsibility.

Breaking the Cycle : Effective Punishment, Rehabilitation and Sentencing of Offenders²

This Green Paper, published by the Ministry of Justice on 7 December 2010, details the broad approach of the Government's 'Rehabilitation Revolution'.

The paper's initial premise mirrors Lewisham's local Total Place findings – that despite record investment in prison and offender management structures almost half of all adult offenders released from custody reoffend within a year, and 75% of offenders sentenced to youth custody reoffend within a year.

¹ <http://goo.gl/45hxl> - Policing in the 21st Century - Police Reform and Social Responsibility Bill

² <http://goo.gl/hyVMp> - Breaking the Cycle : Effective Punishment, Rehabilitation and Sentencing of Offenders

There will be a renewed thrust toward rehabilitation of offenders, through a more integrated approach through joint commissioning and 'Payment by Results'. This is a radical and decentralising reform that will deliver a fundamental shift in the way rehabilitation is delivered. It will make the concept of 'justice reinvestment' real by allowing providers to invest money in the activity that will prevent offending rather than spending money on dealing with the consequences. The payment by results approach will encourage innovation and bring out the diverse skills from all sectors. The Government plans to apply these principles to all providers by 2015, however they will pilot the concept in a number of local areas, of which Lewisham is one:

146. We plan to introduce a local incentive scheme. This model asks local partners to work together to develop a plan to prevent offending and reduce reoffending. They will then jointly commission innovative services to fill any gaps. They will be free to target their resources on specific groups of offenders in line with their local priorities and crime patterns. If they were able to reduce crime and hence demand for criminal justice services through their joint efforts they would share in any savings made. These could then be reinvested in further crime prevention activity at the local level.

147. To test the feasibility and benefits of such a model we will launch and run two projects from April 2011 for two years: one project in Greater Manchester; and one project across a number of London Boroughs, including Lewisham and Croydon.

Since November 2009, the Total Place project focused on examining offender management. Lewisham has been at the forefront of innovation in this area, and is working very closely with Central Government on the developments in this field in order to deliver a sustained reduction in re-offending in Lewisham and to prevent crime, disorder and harm to the public.

National Drugs Strategy 2010³

The new Drug Strategy has three main themes:

1. Reducing demand on drugs – through treatment of drug users
2. Restricting supply – through enforcement of suppliers
3. Building recovery in communities - Recovery Network Support
Recognises the importance of support networks in facilitating recovery and wellbeing - key things are peer support, work with families and children of drug users.

The strategy has two overarching aims:

1. Reducing illicit and other harmful drug use
2. Increase the numbers recovering from their dependence

National ASB Consultation

'Anti-social behaviour' describes a range of everyday nuisance, disorder and crime, from graffiti and noisy neighbours to harassment and street drug dealing. It is sometimes dismissed as trivial, but anti-social behaviour has a huge impact on victims' quality of life, and it is the public's number one concern when it comes to local crime issues.

³ <http://goo.gl/WFvap> - National Drugs Strategy 2010

Reducing ASB is the new Government's priority, and in its 2010 review of ASB it was found that the toolkit practitioners currently use is extensive, and runs from warning letters all the way up to court orders like the Anti-social Behaviour Order (ASBO).

As a result, the Government are proposing a radical streamlining of the toolkit:

- Repeal the ASBO and other court orders for anti-social individuals, and replace them with two new tools that bring together restrictions on future behaviour and support to address underlying problems – a **Criminal Behaviour Order** that can be attached to a criminal conviction, and a **Crime Prevention Injunction** that can quickly stop anti-social behaviour before it escalates
- Ensure there are powerful incentives on perpetrators to stop behaving antisocially - by making breach of the new orders grounds for eviction from social housing
- Bring together many of the existing tools for dealing with place-specific anti-social behaviour, from persistent litter or noisy neighbours, to street drinking and crack houses, into a **Community Protection Order**
- Bring together existing police dispersal powers into a single police power to direct people away from an area for anti-social behaviour
- Make the informal and out-of-court tools for dealing with anti-social behaviour more rehabilitative and restorative;

Lewisham Crime Reduction Service and its partners in the Safer Lewisham Partnership will work closely with the Government on development of the new ASB toolkit in order to ensure that it can be effectively deployed to tackle low-level criminality and ASB for the benefit of Lewisham residents and visitors to the borough.

Financial policy

Alongside new policies, there has been a well-publicised effort to reduce public deficit with associated reductions in funding available to local areas. Lewisham Council's Crime Reduction Service, Lewisham Police, Probation and other partners are not exempt from these reductions in funding and are having to make challenging decisions on where to focus remaining resources.

Many of the remaining funding sources available from Central Government have had 'ring-fencing' taken off them, meaning that local areas can now decide how this money is best spent. This concept of 'Localism' runs strongly throughout the Government's policies – local areas are receiving much more freedom and independence to act in the interests of local people on issues that are important locally.

Safer Lewisham Partners are focused to deliver better services for less, wherever possible – and where services need to be changed or even stopped due to funding shortfalls the Partnership is committed to listening to residents and being evidence-based and transparent in our service planning. An intelligent commissioning process will be adopted in all cases and where appropriate payment by results contracts will be considered to help achieve defined outcomes for Lewisham residents.

Targets and Performance

In the past, Crime Reduction activity, along with many other area of local government work, was measured through a comprehensive set of process targets. These targets relied upon gathering and processing large amounts of data.

While providing a comprehensive picture of local activity this process had significant resource implications for all partner agencies, and the targets that were monitored were often distant proxies for more general 'positive' outcomes. Another challenging aspect of the previous system of monitoring and measurement was that some of the targets across the Partnership were contrary to each other. For example the Police had to meet 'Sanction/Detection' targets for every crime type, while the Youth Offending Service had to divert appropriate young people from the Criminal Justice System, meaning Police would not receive a 'Sanction/Detection' for those cases.

The Government has decided to delete Local Area Agreements and National Indicator performance framework that focused on processes and instead measure outcomes and 'Payment By Results'. This indicates that there will be fewer targets in the future. Responsibility for monitoring performance will be more clearly delegated to the SLP which is accountable to Lewisham Strategic Partnership and with its individual partners accountable to their own organisations. Ultimately, through Select Committees and Scrutiny Panels, all partners are accountable to the democratically elected representatives of the people of Lewisham.

The future performance framework for Safer Lewisham Partnership will be determined annually by the **Partnership Intelligence Development Cycle**:

"At the start of every fiscal year we will undertake a detailed assessment and consultation in order to set priorities for the Partnership, and will be accountable for their delivery by the end of that year."

4. WHAT WE KNOW ABOUT CRIME IN LEWISHAM.

Aggregate crime and offending levels in Lewisham are average when compared to other London boroughs that are policed by the Metropolitan Police Service. When comparing against other Inner London boroughs, Lewisham has consistently one of the lowest crime boroughs in the group.

Some 35,000 Notifiable Offences – those that Police have to report to Home Office - are reported to Lewisham Police annually.

The British Crime Survey estimates the total number of crimes committed in Britain in 2007/08 as 10.14 million. According to 2001 Census revisions, Lewisham has 0.4% of the UK population. Assuming, conservatively, that the Borough has 0.4% of UK crime then this implies that approximately 41,000 crimes are committed in the Borough each year.

This is some 9,500 crimes more than the recorded statistics for Lewisham or approximately 30%. This is broadly in line with national estimates that a third of all crime is unreported. Given these very broad and general assumptions it would appear that Lewisham's rate of reporting to the Police is broadly in line with national average.

There are challenges in Lewisham. As a statistically 'young' borough Lewisham has a much higher number of young people compared with adults, and young people tend to be more criminogenic between the ages of 15-21. There is an ongoing challenge of tackling Personal Robbery, Knife Crime and Youth Violence – the number of these offences tends to be higher in Lewisham than for its statistical neighbours.

This document does not contain detailed crime statistics in this document, given that the data will soon be out of date. However, there is a huge range of detailed, publicly available crime information available online:

To see detailed Police street-level crime maps and data, as well as details of your local policing team and beat meetings for your area, please visit:

<http://www.police.uk/>

To see detailed crime statistics for Lewisham – and other Met Boroughs – please visit:

<http://www.met.police.uk/crimefigures/>

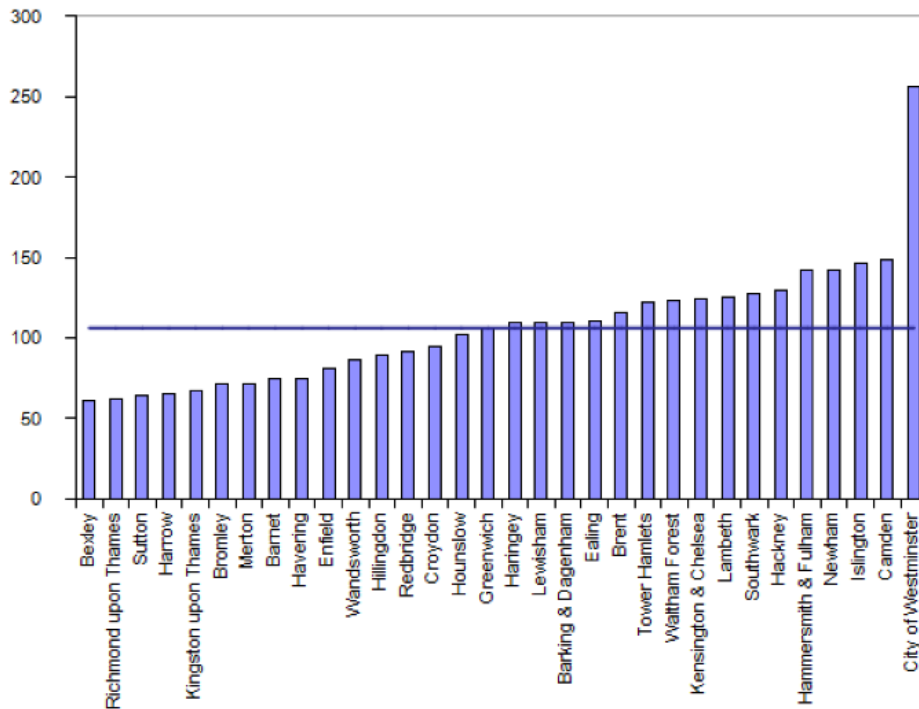
If information you require is not available online, you may request statistics from the Safer Lewisham Partnership, the contact details are listed at the end of this document.

5. WHAT WE ACHIEVED IN 2008-2011

Crime Statistics

On the whole, Lewisham has an average amount of crime in London, and one of the lowest in Inner London:

**iQuanta Barchart Force - Crimes per 1000 Residents
Metropolitan Police BCUs
All Crime
01 Apr 2010 - 31 Mar 2011**



**Overview Report - Metropolitan Police and CDRPs
Crime
Data to the End of Mar 11**

	All Crime	Most serious violence exc GBH without intent	Serious Acquisitive Crime	Domestic Burglary	Robbery	Vehicle Crime (excluding Vehicle Interference)	Other Wounding	Racially or Religiously Aggravated Offences
Lewisham								

Key to Performance Comparisons

Across Time - Shape

- Clearly Improving
- Clearly Deteriorating
- Improving
- Deteriorating
- No apparent change

Based on Significant Change

Against Peers - Ladder

- Better than
- In line with peers
- Worse than

Based on last 3 months

Click on the ladder to view corresponding charts

Source – iQuanta, 31-March 2011⁴.

⁴ iQuanta is intended to provide management information. In order to do this effectively, timeliness is considered more important than complete accuracy. Data based on returns from forces are therefore not subject to full checks, which would delay inclusion on iQuanta. For these reasons, the accuracy of data from iQuanta or about iQuanta usage cannot be guaranteed. Such data should not be used explicitly or implicitly in circumstances in

There have been 434 incidents of Most Serious Violence (MSV) recorded in Lewisham over 08/09. In 09/10 the MSV category has been reduced by 3.7% to 418 offences. In 10/11 the number of allegations has fallen further to 338.

Domestic Violence – one of the key priorities for the Partnership – has remained level over 08/09 with 2949 offences recorded that year. It was an increase of 2 offences on 07/08. However, in 09/10 the Partnership has deployed a range of measures to tackle Domestic Violence, and in 09/10 the number of offences has dropped by 19.8% to 2356 offences.

Robbery – a key statistic for Lewisham. Robbery is a crime that combines many important elements: it makes people feel unsafe on the streets, most of it is perpetrated by young people against other young people, and it is the key ‘knife enabled’ crime in the borough. Most recorded knife crimes are street robberies. In 08/09 there was a reduction of 17.9%, to 1374 offences compared to preceding year. In 09/10 there was a further reduction of 5.3% to 1304 offences. However, in 10/11 the category showed an increase of 24% to 1621 offences. The Partnership is aware that this increase is unacceptable and has prioritised activity to focus on this area.

Residential Burglary is a critical ‘volume crime’ type. In 08/09 there were 1978 Res. Burglaries recorded in Lewisham, a 10.5% drop from 07/08. Over the course of 09/10 there had been a minor increase of 2.7% in this category, to 2029 offences. There has been another increase in 10/11 to 2376 allegations. As above, activity is prioritised and closely monitored to support a reduction.

Preventing young people entering the criminal justice system

Lewisham Youth Offending Service (YOS) have successfully developed the Triage scheme to incorporate the Youth Justice Liaison and Diversion (YJLD) work. Triage has been firmly embedded into mainstream practice over the last three years with partners from the YOS, Police and other partner agencies working together to divert young people from the youth justice system. Since 2008 when Triage commenced, the number of young people who have received criminal disposals has reduced in line with other London Boroughs.

The YJLD is a pilot programme funded by Department of Health that aims to identify concerns regarding young people's mental health at the earliest stage. We have experienced an increase in young people receiving support from our mental health team for issues such as bereavement and for young people who have a family member dealing with a terminal illness. Through early intervention we have been able to address the cause of their offending behaviour in order to prevent an escalation.

Young people sentenced to custody

There has been a 17% reduction in the numbers of young people who receive a custodial disposal from the courts. The percentage of young people who receive a custodial disposal stands at 10.2% of all disposals. This reduction has been achieved due to improved relationships with the Courts, greater confidence in local provision and greater focus on interventions to both support and rehabilitate.

which complete accuracy and certainty are required. Whenever data from iQuanta is circulated or used in appropriate public contexts, it should be made clear that it has not usually been fully checked and finalised.

The Government is focused on outcomes with an associated interest in developing opportunities for 'payment by results'. For drug treatment it is anticipated that the positive outcomes will relate to reduced substance use, improved rates of abstinence, improvements in individuals' health and social functioning, reductions in offending, and clients moving closer to achieving employment and stable housing.

The Partnership has undertaken a comprehensive redesign of the treatment system and, commissioned of a provider, a single integrated drug treatment provider, to deliver an end to end provision for drug and alcohol users.

The new integrated treatment system will focus on recovery throughout a service users care pathway. There will be a specific recovery team will provide counselling, after care, alternative therapies, group work, peer mentoring and Education Training and Employment (ETE). All service users with primary alcohol issues will also have the ability to access one-one, group work, counselling, after care, alternative therapies, peer mentoring and ETE.

Evidence indicates that carers can have a significant positive impact on treatment outcomes and community integration. Therefore Lewisham intends to ensure that carers have their own assessment of needs, that they have access to a carers group, are found support through mainstream services e.g. Lewisham Carers. This will enable carers to be more supported and therefore more involved in service users treatment, especially care planning and recovery goal setting for positive outcomes regards re integration as well as aftercare.

6. INTELLIGENCE DEVELOPMENT CYCLE

The annual priorities for the SLP and the wider performance framework will be determined annually by the Partnership Intelligence Development Cycle.

At the start of every fiscal year a detailed Strategic Assessment will be undertaken and public consultation carried out in order to set annual priorities for the Partnership, who will be accountable for their delivery by the end of that year.

The SLP's Strategic Assessment is an annual document which aims to identify the key crime, disorder, drug/alcohol misuse and Anti-Social Behaviour (ASB) issues that affect the borough. Its key aim is to outline measures that will improve community safety, including how the local community can feel reassured and confident that their concerns and fears are being addressed.

The Strategic Assessment also helps to identify intelligence/knowledge gaps, from which the Partnership can develop a plan of intervention aimed at reducing the problems. This includes directing analysis and consulting with communities on crime, disorder and ASB problems to enable us to be intelligence-led, problem oriented and evidence-based in our interventions, leading to specific and measurable intervention strategies.

In line with the Crime and Disorder Act 2007, this 3-year strategy will be reviewed annually as a part of this process.

7. OUR AIM : PUBLIC PROTECTION THROUGH CRIME REDUCTION

There are 5 overarching strands of work that will help us deliver a safer Lewisham:

7.1 REDUCING ANTI-SOCIAL BEHAVIOUR (ASB)

Antisocial behaviour is any aggressive, intimidating or destructive activity that damages or destroys another person's quality of life. Lewisham Council's Neighbourhood Community Safety Service along with the police and housing partners are integral in tackling ASB on the borough. They ensure those who cause ASB are appropriately enforced and evicted from social housing if necessary. These teams will also work with private landlords to tackle issues of ASB as well as undertake mediation, dispute resolution and Restorative Justice interventions in appropriate cases.

Good Practice - DPPPO 'Controlled Drinking Zone'

Street drinking has been an issue in Lewisham for some time but over the last two years, complaints from both residents and traders alike have increased in frequency and frustration. Particular areas of the borough have long been associated with street drinking and the Safer Lewisham Partnership has made a commitment to alleviating this problem for all concerned.

Following the use of Drinking Control Zones in various areas of the borough, it was proposed in 2010 that a Designated Public Place Order be introduced across the whole of the borough as a method of addressing street drinking and alcohol related anti-social behaviour. A public consultation was undertaken on the pilot proposal.

A public consultation was conducted during February and March 2011 on the effectiveness of the DPPPO in the borough to address alcohol related anti-social behaviour and to establish future options for the scheme. The consultation was delivered through a Public Survey which was available online, and a Safer Neighbourhood Team Survey which was sent to all SNTs across the borough during the same period.

Overall the response to the DPPPO from the public consultation was extremely positive. 91% of responders thought the DPPPO was a good idea. 85% of responders thought the DPPPO should be made permanent.

WHAT WILL RESIDENTS SEE?

- A minimum standard across all agencies dealing with ASB
- Prompt, co-ordinated Multi-Agency response to ASB problems focusing on long-term solutions
- More visible presence of Council and Police tackling ASB through street briefings and weekly local surgeries.
- Integrated working relationship with Social Landlords in Lewisham to achieve better outcomes for Lewisham's tenants in response to Crime and ASB.

7.2 REDUCING REOFFENDING – REHABILITATION, PUNISHMENT AND PAYBACK

Community Safety Partnerships (CSP) are a key part of the local 'Reducing Reoffending' delivery landscape, helping to co-ordinate the work of local partners. The **Police and Crime Act 2009** extends the statutory duty of CSP's to include reducing reoffending and to make probation a *responsible authority* rather than a *co-operating body* as at pre-April 2010.

Nationally, over half of all crime is currently committed by people who have previously been through the criminal justice system and who go on to re-offend (Home Office, 2006) . Within

one year of being of being discharged from prison 39% of people with sentences over one year will reoffend. Over two years 64% of this cohort will reoffend.

Approximately 830 people per year are released from prison into the community in Lewisham , with 500 having served under 12 months and 330 having served over 12 months. Based on these national estimates of reoffending, 578 people from this cohort will re-offend within Lewisham within two years of release.

In reality repeat offences are likely to be much higher than this, given that only a proportion of crime gets caught or results in conviction. Research by the Social Exclusion Unit estimates that for each reconviction five recorded offences are committed. Ethnographic work with Offender in Lewisham also reveals that for all of the sampled offenders, there are a large number of crimes they have committed for which they were never convicted.

These offences are estimated to cost the people, businesses and public bodies of Lewisham at least £95 million per year.

Good Practice – Specialist DV Court

Since July 2010, the London Mainstream Model (LMM) cluster court has been in operation at Greenwich Magistrates Court for domestic violence cases originating in Lewisham. The aim is to provide an enhanced criminal justice response for victims of domestic violence.

The borough development of the LMM aims to adhere closely to all the components of a Specialist Domestic Violence Court (SDVC). Lewisham DV cases are clustered on Thursday mornings at Greenwich Magistrates Court. All staff present in the court are trained in domestic violence, including magistrates, legal clerks, list callers, prosecutors, probation staff, police officers and Independent Domestic Violence Advocates (IDVAs), and there is a Coordinator for the LMM in court who acts as a single point of contact for Thursday mornings.

It is important to recognise that adults and young people convicted of offences are some of the most socially excluded within society. The challenge is to punish those who break the law while also helping rehabilitate those who have offended through improved management of offenders so they are less likely to commit crime again.

This is being done by tackling the root causes of their offending behaviour, reducing social exclusion, and by working right across the Partnership to:

- Tackle the high prevalence of drug and alcohol misuse;
- Deliver programmes and services to tackle the root causes of offending behaviour;
- Improve basic skills and ability to find and retain suitable employment and tackle debt;
- Improve mental and general health
- Ensure offenders can access and retain appropriate accommodation;
- Work with children and families of offenders to break the intergenerational cycle of offending

This will be delivered in conjunction with robust police enforcement and Criminal Justice outcomes for those that choose to continue offending.

Good Practice - Integrated offender management (IOM)

As a result of Total Place, Drugs intervention Programme, prolific and priority offenders and the Diamond Initiative Lewisham have developed a comprehensive offender management model based on an external organisation providing an innovative supervision and rehabilitation service for mainly non-statutory offenders.

In addition to this, we are working jointly with Probation to deliver joint effective interventions to the statutory cohort, as well as working with Police to target and enforce prolific offenders who are prepared to change their offending lifestyle through the Repeat Offenders (ROs) group. All three strands are joined up through SLP Reducing Reoffending governance structure to ensure mutual assistance and elimination of duplication.

This approach should ensure that we cover all profiles of offenders on the borough with some level of intervention.

WHAT WILL RESIDENTS SEE?

- More integrated and cost-effective offender management services
- Higher quality drug treatment services available to offenders to assist them in rehabilitation.
- Fewer Lewisham offenders re-offending upon release from prison
- Better, more targeted use of resources aimed at rehabilitating offenders in the community

7.3 WORKING WITH YOUNG PEOPLE - BOTH VICTIMS AND PERPETRATORS OF CRIME - YOUTH JUSTICE

Lewisham Council's Youth Offending Service (YOS) is responsible for managing young offenders in the community, to ensure the risk to public is minimised while the young person is supported to pursue educational opportunities and activities that will divert them from offending lifestyles. In addition to this, the YOS offers Restorative Justice interventions and preventative work with children at risk of becoming offenders.

Lewisham children's Partnership provide a range of activities, clubs and projects across the borough. These engage young people in a controlled and supervised setting and divert them from loitering in public spaces, causing ASB and potentially turning to crime. Detached Youth Workers engage with young people on the streets.

Together with Police, these services work closely with Schools in Lewisham to ensure appropriate preventative work is undertaken in partnership.

Safeguarding young people will be a critical aspect of work with victims and perpetrators and will link into services related to children social care and health.

Good Practice : Victims of serious Youth Violence MARAC

The Multi Agency Risk Assessment Conference (MARAC) is part of Lewisham's coordinated partnership response to Victims of Serious Youth Violence, it follows the Domestic Violence MARAC and the framework is set by CAADA.

The project aimed to work with young victims and witnesses of crime (and their families) in the London Borough of Lewisham to:

- Reduce the number of incidents of serious youth violence in local communities
- Support victims to feel safer and more secure
- Increase young victims' confidence in agencies, such as the police, with the aim of increasing the numbers of young people accessing the services available to them and reporting crimes
- Reduce the number of young victims adapting offending behaviour

WHAT WILL RESIDENTS SEE?

- Integrated services for young people at risk of offending, in partnership with the Lewisham Youth Services
- Robust enforcement of those young people who persist in offending
- Help and interventions for young people who wish exit gangs and gang lifestyles.
- Offender Behaviour Programmes will address the causes of criminality and prevent further offending

7.4 'VOLUME CRIME' – OFFENDING THAT AFFECTS MOST PEOPLE IN LEWISHAM

Volume crime is a technical term for mainly low-level offences that happen in large numbers and affect many Lewisham residents. This includes offences like Residential Burglary and Theft From Motor Vehicle., the impact on residents is significant and the aggregate a large direct cost placed on the people of Lewisham through property lost and damaged and increased insurance premiums.

Good Practice – DV MARAC

The MARAC aims to safeguard the highest risk victims of domestic violence as well as their children, whilst making links with other public protection arrangements in relation to perpetrators and vulnerable adults and to safeguard agency staff as well as to address the behaviour of the perpetrator. This is achieved by an information and action planning process at MARAC with case management and specialist support before, during and after the meeting provided by the Independent Domestic Violence Advocates (IDVA).

Lewisham MARAC has recently undergone CAADA's (Coordinated Action Domestic Abuse) Quality Assurance process. The final report, which was recently furnished by the Home Office, shows that 89% of the 10 key principles were awarded a green rating, meaning all key aspects of those principles have been met. 11% were awarded an amber rating, meaning most key aspects of those principles have been met. No principles were awarded a red rating. The report states this is "an excellent achievement by all agencies involved and reflects a well-established MARAC."

WHAT WILL RESIDENTS SEE?

- Coordinated partnership action delivered through Problem Solving Processes
- Visible Police & Council presence in order to deter offender and reassure residents
- Enforcement and preventative measures aimed at reducing the number of Volume Crimes in Lewisham

7.5 MAKING LEWISHAM SAFER THROUGH CRIME PREVENTION – AND WORKING WITH COMMUNITIES

Our broader preventative aim is ensuring vulnerable people - in the broadest sense of the word - receive appropriate crime prevention advice, interventions and referrals to services that will maximise their safety.

There have been a number of recent Consultations on matters related to Policing and Crime Reduction – in 2010 we have had Anti-Social Behaviour Consultation which fed into the ASB Review, as well as the Designated Public Place Order (DPPO) Consultation around the issue of 'street drinking' in some parts of the borough.

There is an annual consultation on the priorities set by the Safer Lewisham Partnership, where residents get the opportunity to highlight what is important to them so that Partnership can include their concerns in the Partnership Intelligence Development Cycle.

Each ward in Lewisham has its own **Local Assembly**⁵. Anyone who lives, works or studies in the ward are encouraged to attend. Meetings take place up to four times a year.

⁵ Local Assemblies Team : email localassemblies@lewisham.gov.uk Telephone 020 8314 7034, <http://goo.gl/CJHwn>

There will be open discussion and debate about what matters in the local area. Real action will be taken to solve the issues raised. The community will work together with the Council to make a real change to your area.

We are committed to consulting and seeking the views of residents on all major issues related to Policing and Crime Reduction.

A key part of consulting the residents comes in the form of Partnership engagement with Lewisham Community Police Consultative Group (LCPCG), which is an independent Community Forum. The Group discusses aspects of policing, community safety and related issues that matter to the communities of Lewisham.

WHAT WILL RESIDENTS SEE?

- Residents able to affect the what annual priorities the Partnership sets
- Residents consulted on major crime-reduction projects
- Police & Council listening to resident's views and opinions

8. FURTHER INFORMATION AND CONTACT DETAILS

Further copies of this Strategy can be obtained on request to the Crime Reduction and Supporting People Service within the Council. It will also be made available on-line on the new Lewisham Council's website.

If you would like the information in the document translated into a different language, provided in large print or in Braille or the spoken word, please contact the Crime Reduction Service.

Tel No. : 0208 314 8056

Post: Crime Reduction Service

 London Borough of Lewisham

 Mercia Grove

 Lewisham

 London SE13 6BJ

The Partnership is committed to ongoing improvements in the services we deliver. We would welcome any feedback, suggestions or proposals from individuals or organisations.

For practical advice in relation to community safety and crime prevention, please visit the website:

www.crimereduction.gov.uk

Call Crime Stoppers anonymously on 0800 555 111 to give information about a crime

For advice and support in relation to drugs and alcohol problems, visit Frank at :

www.talktofrank.com or call 0800 776600

For information on your local Safer Neighbourhood Teams please visit:

<http://www.met.police.uk/teams/lewisham/index.php>

To see detailed Police street-level crime maps and data, as well as details of your local policing team and beat meetings for your area, please visit:

<http://www.police.uk/>